



LINKWELL[®]
ELECTRIC



THERMAL SOLUTION
PRODUCTS



APPLICATION AREA



- **Wind power:**

Wind power is the conversion of wind kinetic energy into electrical energy. As a clean and renewable energy source, wind energy is receiving more and more attention from all countries in the world.

- **Charging pile:**

The Chinese government actively promotes the application and development of new energy vehicles, and the replacement of power stations as an important supporting infrastructure necessary for the development of electric vehicles has very important social and economic benefits.

- **Automatic robot:**

The cutting-edge technology of the industry is AI (Artificial Intelligence), an intelligent robot. Automation is the general trend of the future society, and it is more and more closely related to communication engineering and CS (computer science).

- **Photovoltaic:**

The main principle of photovoltaic power generation is the photoelectric effect of semiconductors. When a photon is irradiated onto a metal, its energy can be completely absorbed by some electron in the metal.

- **High and new technology industry:**

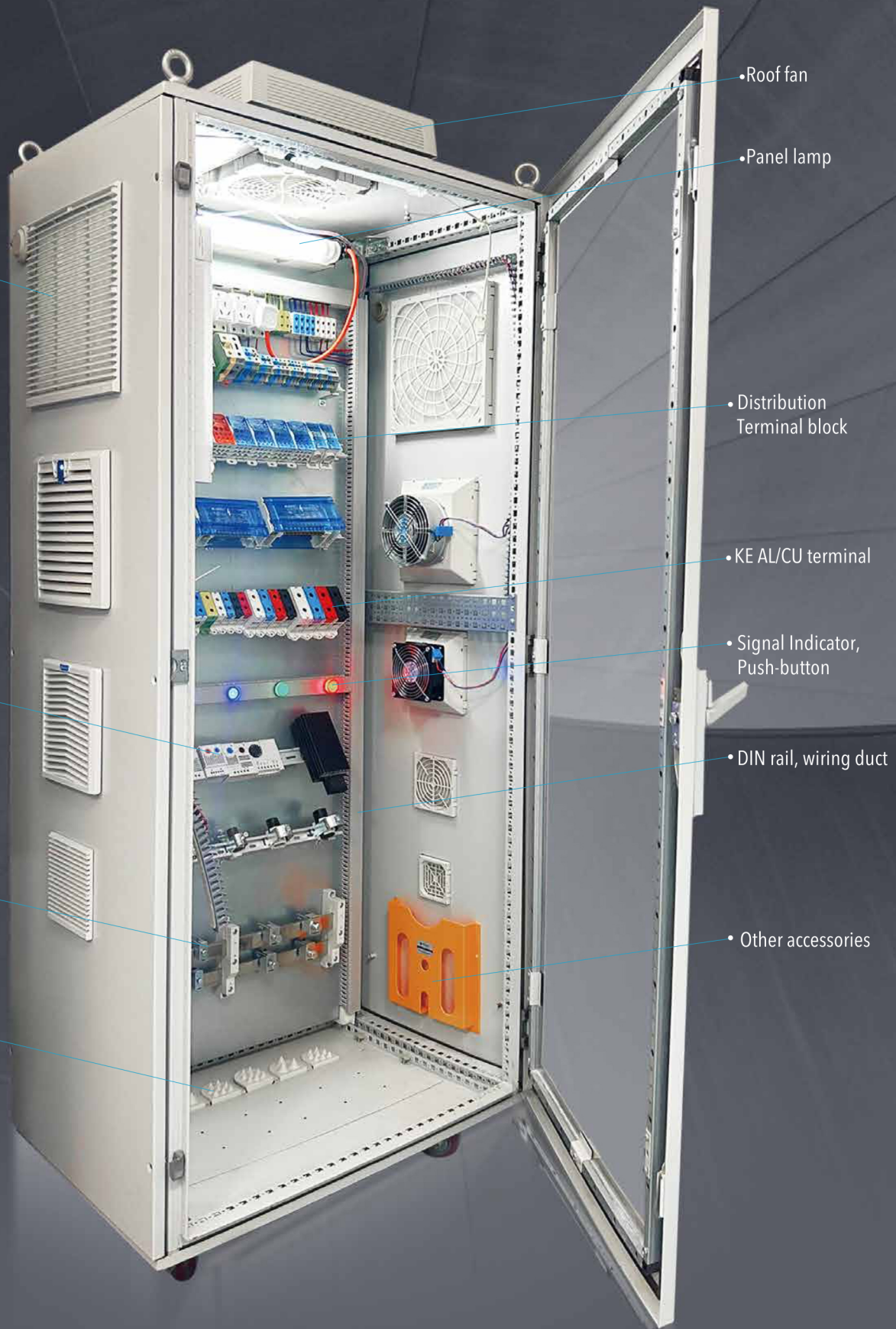
The high-tech industry mainly includes three major fields: information technology, biotechnology and new materials technology.

- **Cabinet and electrical complete set:**

As an important supporting infrastructure for the development of electric vehicles, charging and replacing power stations have very important social and economic benefits. LINKWELL ELECTRIC products are widely used in the charging pile industry, making the equipment more stable and efficient in operation.

- **Infrastructure**

Provide all-round service for customer's system integration solution.



• Wall mounted fan-filter.

• Thermostat, heater.

• Bus bar system.

• Cable entry system.

• Roof fan

• Panel lamp

• Distribution Terminal block

• KE AL/CU terminal

• Signal Indicator, Push-button

• DIN rail, wiring duct

• Other accessories

LINKWELL ELECTRIC is a professional company engaged in low voltage electrical products for switchgear board and automation industry , such as panel ventilation fan filter,heater, thermostat,control transformer,terminal blocks,wiring duct and other panel accessories.

Through our decades' efforts and development LINKWELL now becomes a group company with several factories by entirely holding or partly holding ,not only self-production but also few trading,in order to provide one- stop-solution of panel accessories for panel builder.

Our main markets are European countries, Americans, Middle East, South Asia and China, you can find us in more than 100 countries all over the world, well-known with good reputation in the market for the sake of our sustainable quality and competitive prices, kind and prompt services to clients,our main partners are those reputable companies like: ABB,SIEMENS,SCHNEIDER ROCKWELL automation,CHINT.



LINKWELL ELECTRIC policy is to offer a full support to Clients:

- pre-after sales assistance
- customized products
- fast delivery
- monitoring customers' satisfaction

Rather than a supplier, LINKWELL ELECTRIC aims to be a Client's industrial PARTNER

our company always pays special attention to protecting the benefits of clients' so that both of us can gain the better benefits from the relations between us.

We warmly look forward to establishing, reinforcing and expanding long term fruitful relationship with the reliable clients all over the world.

Let's get busy and pull together to create a better future!



Innovation Quality Global

COMPANY MISSION

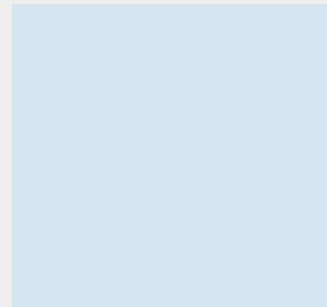
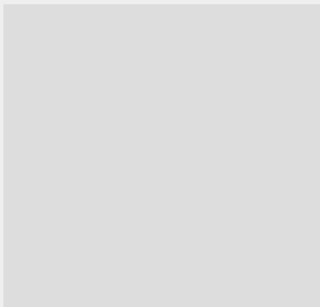
To win respect of "Made in China" from the world

COMPANY VALUE

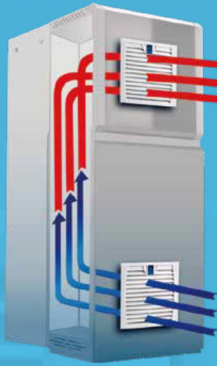
Realize the dream for employees
Create value for customers
Take responsibilities for the society

COMPANY VISION

To be a global and well-known brand,
one stop solution supplier for electrical cabinet components



Introduction To Fan And Filter Classification



Low noise



Energy saving



Water proofing



Copper motor



High Air-flow



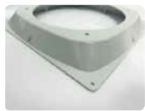
Fast installation

1. FU series

Flexible fan size by embedded nuts

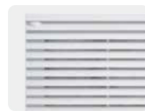


Air duct optional



3. LK66 series

Straight line grill design



5. FK55 series

Thinner cover



Curve line grill design



2. LK32 series

Easy-open buckle



Power supply working indicator option



4. FF series

Standard material PC+Alloy, UV resistance



Corrugated filter mat option

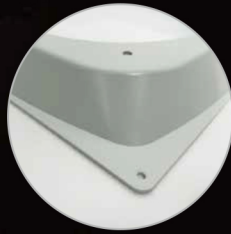


FU SERIES FAN-AND-FILTER

Energy saving, environmental protection, and efficient product performance meet the requirements of temperature control systems



New Designed Grill, better Ip Rating



Air Duct Options For Bigger Air Flow



Easy-open Structure, quicker Maintenance Of Filter Mat



Premium Sealing Gasket



Flexible Fan Size By Embedded Nuts



Snap-in Assembly Or Bolts Fasten



FU95.230

FU95.300



IP54

CE

RoHS COMPLIANT

UL94-V0

-20 +65 °C

SPECIFICATION

Fan filter model	FU95.230	FU95.115	FU95.024
Rated voltage	220V-240V AC	110V-120V AC	24V DC
Rated frequency	50/60Hz	50/60Hz	-
Air flow rate, free blowing	25/35m³/h	25/35m³/h	35m³/h
Air flow rate, Equipped with standard filter mat	1 × FU95.300: 20/25m³/h		
Axial flow fan	Self starting shaded pole motor		
Rated current	0.07A/0.06A	0.14A/0.13A	0.18A
Power	13/12W	13/12W	4.3W
Noise level	32/35dB(A)	32/35dB(A)	35dB(A)
Operating temperature range	-30°C - +70°C	-30°C - +70°C	-30°C - +70°C
Outlet filter model	FU95.300	FU95.300	FU95.300
Material	Made of injection-moulded thermoplastic, self-extinguishing UL94V0 (optional)		
Air flow direction	Air-in as standard; air-out optional		



New Designed Grill, better Ip Rating

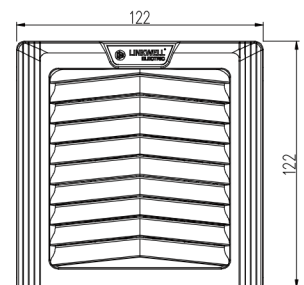
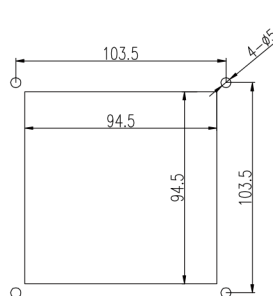
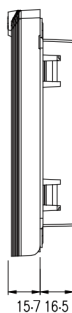
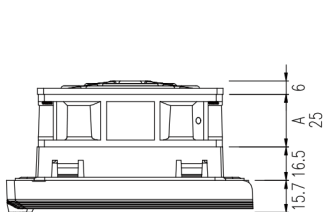


Easy-open Structure, quicker Maintenance Of Filter Mat



Snap-in Assembly Or Bolts Fasten

DIMENSION (mm) Optional Fan Size:92 x 92mm



FU122.230

FU122.300



SPECIFICATION

Fan filter model	FU122.230	FU122.115	FU122.024
Rated voltage	220V-240V AC	110V-120V AC	24V DC
Rated frequency	50/60Hz	50/60Hz	-
Air flow rate, free blowing	65/85m³/h	65/85m³/h	85m³/h
Air flow rate, Equipped with standard filter mat	1 × FU122.300: 55/70m³/h		
Axial flow fan	Self starting shaded pole motor		
Rated current	0.12A/0.11A	0.24A/0.22A	0.35A
Power	19/18W	19/18W	7.7W
Noise level	41/42dB(A)	41/42dB(A)	41dB(A)
Operating temperature range	-20°C - +65°C	-20°C - +65°C	-20°C - +65°C
Outlet filter model	FU122.300	FU122.300	FU122.300
Material	Made of injection-moulded thermoplastic, self-extinguishing UL94V0 (optional)		
Air flow direction	Air-in as standard; air-out optional		



New Designed Grill, better Ip Rating

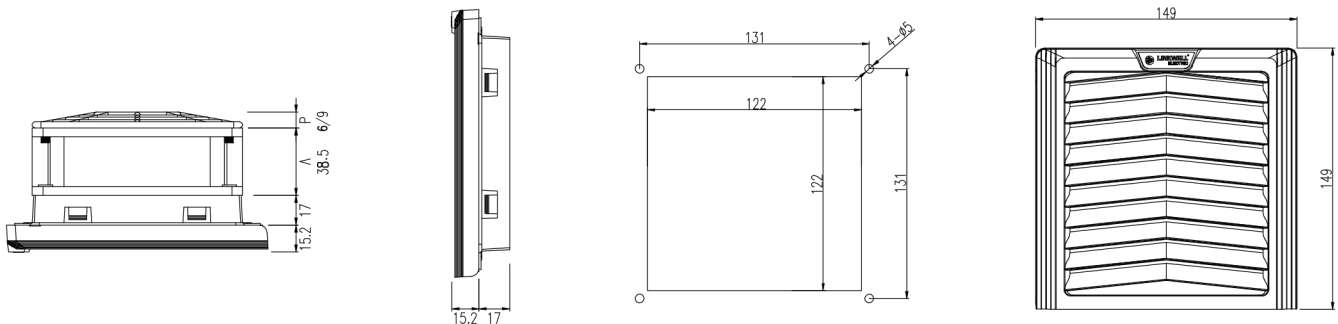


Easy-open Structure, quicker Maintenance Of Filter Mat



Snap-in Assembly Or Bolts Fasten

DIMENSION (mm) Optional Fan Size: 120 x 120mm



FU175.230

FU175.300



SPECIFICATION

Fan filter model	FU175.230	FU175.115	FU175.024
Rated voltage	220V-240V AC	110V-120V AC	24V DC
Rated frequency	50/60Hz	50/60Hz	-
Air flow rate, free blowing	105/126m³/h	105/126m³/h	126m³/h
Air flow rate, Equipped with standard filter mat	1 × FU175.300: 78/90m³/h		
Axial flow fan	Self starting shaded pole motor		
Rated current	0.12A/0.11A	0.24A/0.22A	0.35A
Power	19/18W	19/18W	7.7W
Noise level	41/42dB(A)	41/42dB(A)	41dB(A)
Operating temperature range	-20°C - +65°C	-20°C - +65°C	-20°C - +65°C
Outlet filter model	FU175.300	FU175.300	FU175.300
Material	Made of injection-moulded thermoplastic, self-extinguishing UL94V0 (optional)		
Air flow direction	Air-in as standard; air-out optional		



New Designed Grill, better Ip Rating

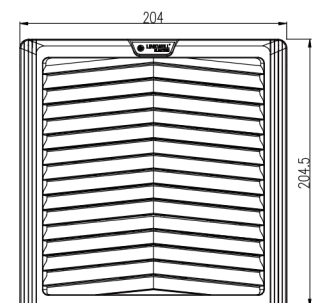
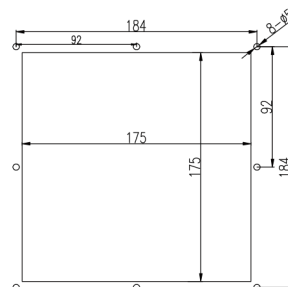
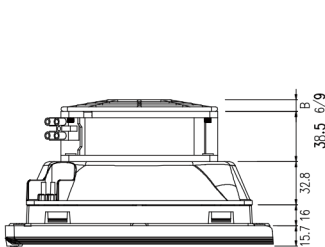


Easy-open Structure, quicker Maintenance Of Filter Mat



Flexible Fan Size By Embedded Nuts

DIMENSION (mm) Optional Fan Size: 120 x 120/150x150/172x150mm



FU223.230

FU223.300



IP54

CE

RoHS
COMPLIANT

UL94-V0

-20 +65
°C

SPECIFICATION

Fan filter model	FU223.230	FU223.115	FU223.024
Rated voltage	220V-240V AC	110V-120V AC	24V DC
Rated frequency	50/60Hz	50/60Hz	-
Air flow rate, free blowing	220/240m ³ /h	220/240m ³ /h	240m ³ /h
Air flow rate, Equipped with standard filter mat	1 × FU223.300: 115/185m ³ /h		
Axial flow fan	Self starting shaded pole motor		
Rated current	0.24A/0.22A	0.48A/0.46A	0.58A
Power	38/36W	38/36W	14W
Noise level	50/52dB(A)	50/52dB(A)	50dB(A)
Operating temperature range	-20°C - +65°C	-20°C - +65°C	-20°C - +65°C
Outlet filter model	FU223.300	FU223.300	FU223.300
Material	Made of injection-moulded thermoplastic, self-extinguishing UL94V0 (optional)		
Air flow direction	Air-in as standard; air-out optional		



Air Duct Options For Bigger Air Flow

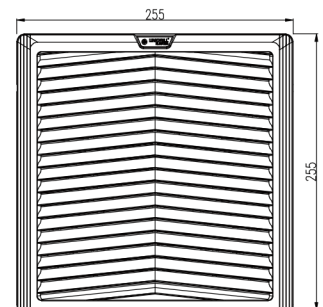
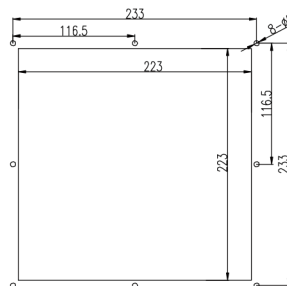
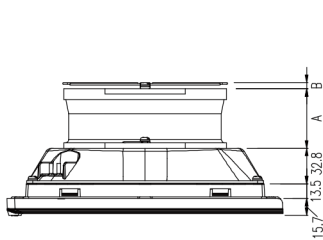


Easy-open Structure, quicker Maintenance Of Filter Mat



Flexible Fan Size By Embedded Nuts

DIMENSION (mm) Optional Fan Size: 180 x60/205x72/220x60/172x51/172 x55/225x80mm





FU292.230



FU292.300



SPECIFICATION

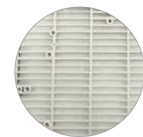
Fan filter model	FU292.230	FU292.115
Rated voltage	220V-240V AC	110V-120V AC
Rated frequency	50/60Hz	50/60Hz
Air flow rate, free blowing	550/600m ³ /h	550/600m ³ /h
Air flow rate, Equipped with standard filter mat	1 × FU292.300: 380/410m ³ /h	
Axial flow fan	Capacitor operated	
Rated current	0.29A/0.37A	0.52A/0.55A
Power	65/80W	65/80W
Noise level	62/65dB(A)	62/65dB(A)
Operating temperature range	-20°C - +65°C	-20°C - +65°C
Outlet filter model	FU292.300	FU292.300
Material	Made of injection-moulded thermoplastic, self-extinguishing UL94V0 (optional)	
Air flow direction	Air-in as standard; air-out optional	



Air Duct Options For Bigger Air Flow

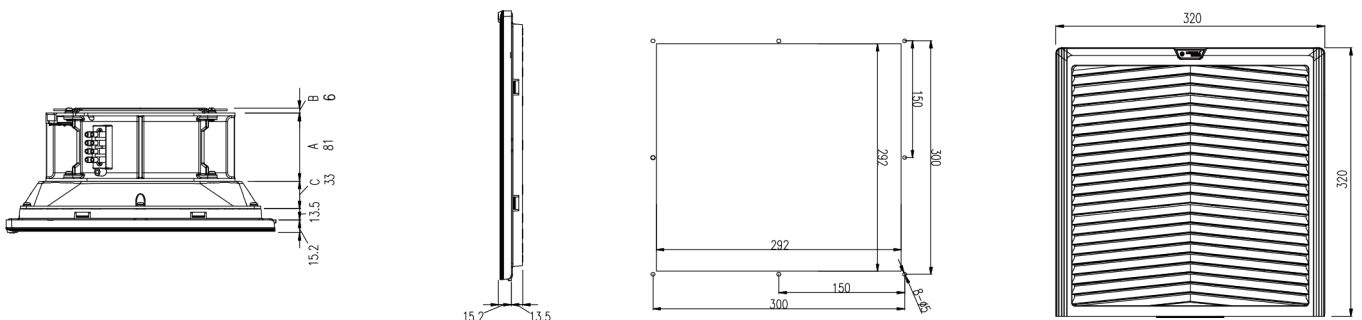


Easy-open Structure, quicker Maintenance Of Filter Mat



Flexible Fan Size By Embedded Nuts

DIMENSION (mm) Optional Fan Size: 205 x 72/220x60/254x89/220x60/225 x80/280x80mm





FU292-D.230



FU292-D.300



IP54

CE

RoHS
COMPLIANT

UL94-V0

-20 +65
°C

SPECIFICATION

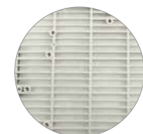
Fan filter model	FU292-D.230	FU292-D.115
Rated voltage	220V-240V AC	110V-120V AC
Rated frequency	50/60Hz	50/60Hz
Air flow rate, free blowing	1150/1350m ³ /h	1150/1350m ³ /h
Air flow rate, Equipped with standard filter mat	1 × FU292.300: 750/950m ³ /h	
Axial flow fan	Capacitor operated	
Rated current	0.52A/0.65A	0.9A/0.95A
Power	120/160W	120/160W
Noise level	70/72dB(A)	70/72dB(A)
Operating temperature range	-20°C - +65°C	-20°C - +65°C
Outlet filter model	FU292-D.300	FU292-D.300
Material	Made of injection-moulded thermoplastic, self-extinguishing UL94V0 (optional)	
Air flow direction	Air-in as standard; air-out optional	



New Designed Grill,
better Ip Rating



Easy-open Structure, quicker
Maintenance Of Filter Mat



Flexible Fan Size By Embedded Nuts

DIMENSION (mm) Optional Fan Size: 205 x72/220x60/254x89 /220x60/225 x80/280x80mm

